



**Typhoon**<sup>TM</sup>

OASIS CAR WASH SYSTEMS

# Typhoon™

The **TYPHOON** can provide you with the income of two bays from a single automatic. The simultaneous action of five independent wands delivers thorough cleaning power while using a fraction of the time needed by typical in-bay car washes.

## **SPEED**

The faster you can get the cars through the bay means the quicker you head for the bank. The Typhoon can wash at a rate of 40 cars per hour. The Typhoon represents a single-bay investment with double-bay returns!

## **CLEANING**

The Typhoon applies chemical and washes five sides of the vehicle at one time. With this unique process we are able to effectively clean more cars per hour than any other equipment on the market today. The Typhoon comes standard with on-board rocker panel blasters and underbody wash so you can control the entire cleaning process.



## **VERSATILITY**

Adjusting to both length and width of each vehicle, the Typhoon's computer controls give you, the operator, the versatility to wash the smallest cars to the longest pickups, including duallys, as well as the ability to select the wash cycles just right for each location. Oasis processors are supplied by the world's most respected name in industrial controls.

## **SAFETY**

From the moment money is inserted and wash is selected, the Typhoon's built-in safety features work to protect your customers as well as the system.

## **RELIABILITY**

Hydraulically powered, the Typhoon drive system is so reliable we offer a 5 YEAR WARRANTY on the drive — a feature that is unmatched in the industry.

## **SIMPLICITY**

The Typhoon's simple design allows for only five moving components in the bay therefore adding to its longevity. The less the downtime, the more the income.

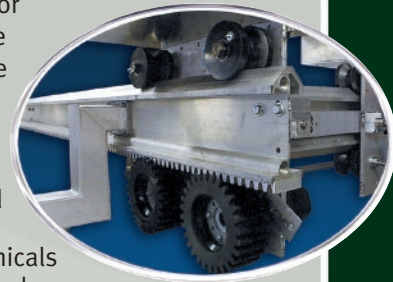
## **PRECISION**

Our gear drive system has machine tool precision. There is no need to worry about low air or flat tires causing the machine to slip or skew. With the Oasis unique drive, every movement in the bay is exact.

## **CONSTRUCTION**

The Typhoon's wall-mounted frame helps protect the unit from damage by water, chemicals and grime through its elevated carriage system.

The Typhoon is also more visually appealing than ground-mounted machines. The wall-mounted frame provides an open, spacious bay, which is appealing to customers.





Triple Foam Shine System

### Options

- **ESP** - Electronic Scanning and Positioning
- Triple Foam Shine System
- Onboard Foamy Tire Cleaner
- Spot Free Rinse System
- Heated Presoak
- Oasiswatch Communication Package
- Oasiswatch Autodialer
- Freeze Prevention Package
- Two-Step Presoak
- In-Bay Pump Package
- Free Standing Dryer
- Auto Cashier and POS Systems
  - Instructional Sign Packages
  - Floor Mount
  - 92" Extended Height Version



Sign Packages



Cleans Subcompacts with Ease



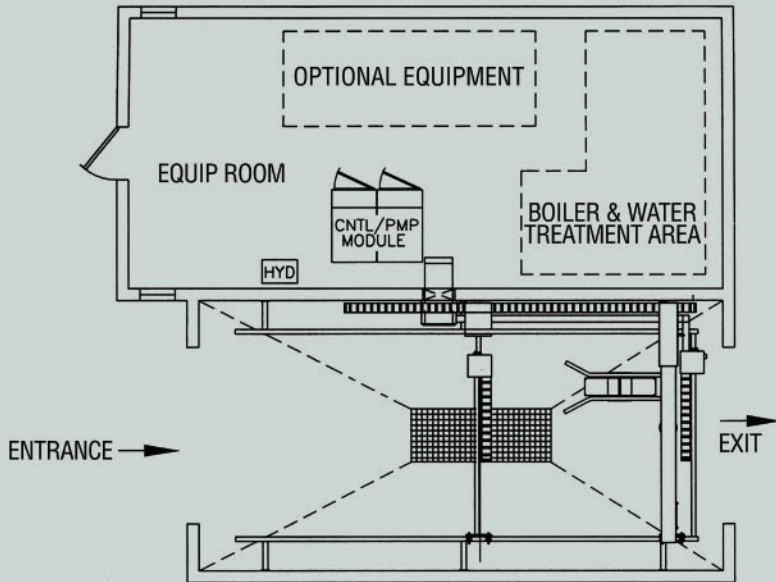
Oasis Communication Package



Wide Vehicle Washing Capabilities



Typhoon Wash Front View



**System Dimensions:**

Bay Dimension: Height - 12'0" (10'6" min.)  
 Width - 15'4" (13'9" min.)  
 Length - 30" (29'6.5" min.)

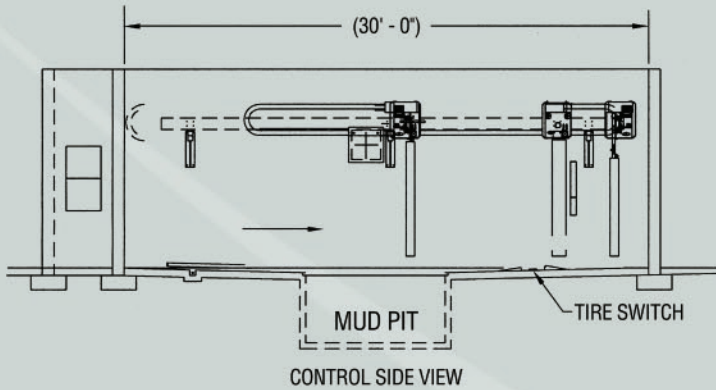
**Maximum Vehicle Height:** 85" standard  
 Optional—92"  
 extended height version

**Required Utilities:**

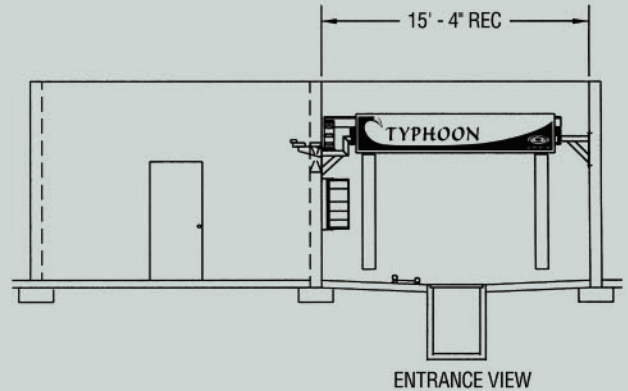
Electrical: 208/230 volt, 3 phase  
 200 AMP service  
 Water Inlet: 1" @ 50 PSI inlet pressure

**Compressed Air Requirements:**

Approx 20 CFM @ 110 PSI



CONTROL SIDE VIEW



ENTRANCE VIEW

**Other Fine Oasis Products Include:**



OASIS CAR WASH SYSTEMS, INC.  
 1909 East 12th Galena, KS 66739  
 Phone: 620-783-1355 or 800-892-3537  
 Fax: 620-783-5735  
[www.oasiscarwashsystems.com](http://www.oasiscarwashsystems.com)

*Eclipse  
 XP*

*Jetstream*

*Galeforce*

*Adapt*



**NOTE:** In the interest of product improvement, Oasis reserves the right to change specifications without notice. For full specifications, prices or information on special systems or special applications, contact your local OASIS CAR WASH SYSTEMS Distributor.